

## *Registration Information:*

### *Date:*

*Please contact the Event Coordinator to schedule a date for the workshop.*

### *Schedule:*

*Sign In: 8:00am-8:30am  
Workshop: 8:30am-4:00pm  
(Lunch break included)*

### *Cost:*

*\$250.00 per participant. The fee includes: light breakfast, lunch, workshop, handouts, and The Wadsworth Anaerobic Bacteriology Manual Sixth Edition.*

*The host may send 5 attendees at no charge and an unlimited number of their medical technology students from their institute for FREE! (Wadsworth Manual not included for Free Students)*

### *Accommodations:*

*We request the host institution provide a conference or classroom setting to accommodate 20-30 participants. Six tables (30"x 72"), and a projector with screen. (Workshop is subject to cancellation if a minimum of 10 paying attendees are not enrolled 2 weeks prior).*

### *To Register Contact:*

*Sandy Burg  
Phone: 800-443-3108  
Fax: 408-782-3031  
sandyburg@anaerobesystems.com*

*Anaerobe Lecture Series  
15906 Concord Circle  
Morgan Hill, CA 95037*

*Please Deliver to: Microbiology Laboratory*

# *Anaerobe*

## *Bacteriology Workshop*

*Would you like to host  
A workshop in your area?*



*The Anaerobe  
Bacteriology  
Workshop will come  
to you!!*

# Anaerobic Bacteriology for the Clinical Laboratory

## Anaerobic Bacteriology

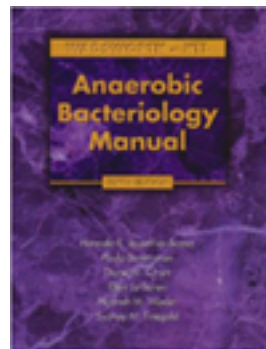
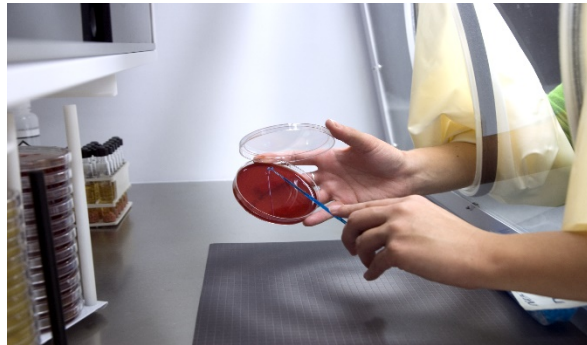
*In today's laboratory environment, cost effectiveness is now a common goal. How can microbiology laboratories apply cost-effective measures to anaerobic cultures?*

*This seminar will answer that question as well as discuss simple and proven methods to isolate and identify anaerobic bacteria.*

*The workshop will consist of three hours of lecture and three hours of practical exam. The lecture will cover theoretical aspects of obligate anaerobiosis, types of anaerobic bacteria infections, and the organisms most frequently involved in those infections. The techniques that will be covered include specimen collection, primary isolation, identification, and susceptibility testing. The practical exam will present fourteen unknown organisms for identification using rapid, inexpensive, and reliable procedures.*

## Continuing Education

*California residents may earn six continuing education contact hours for attending this workshop. Other state may also provide credit. Please refer to your State Department of Education.*



## Course Objectives

*At the conclusion of this workshop, the participants will be able to:*

*Explain the mechanism of oxygen toxicity; which is harmful to anaerobes.*

*Evaluate the strengths and weaknesses of various systems that provide anaerobic conditions.*

*Recognize minimum requirements for the successful collection of anaerobic specimens.*

*Identify the best media for the isolation of anaerobic bacteria.*

*Apply and interpret rapid spot tests for the identification of anaerobes.*

*Identify the most common anaerobes in clinical specimens.*

## Included Textbook

*Wadsworth KTL Anaerobic Bacteriology Manual 6<sup>th</sup> Edition- Jousimies-Somer, Summanen, Baron, Citron, Wexler, and Finegold.*

*This textbook for anaerobes discusses collection, transport, and processing of specimens, identification, susceptibility, and biochemical test procedures.*

## Faculty

*Diane Citron BSc, M(ASCP), Laurie Cox Ph.D., or Mike Cox, CEO Anaerobe Systems*